



CHATTERTON | REES



18 Milner Street

, London, SW3 2PU

£3,334 Per month



18 Milner Street



Description

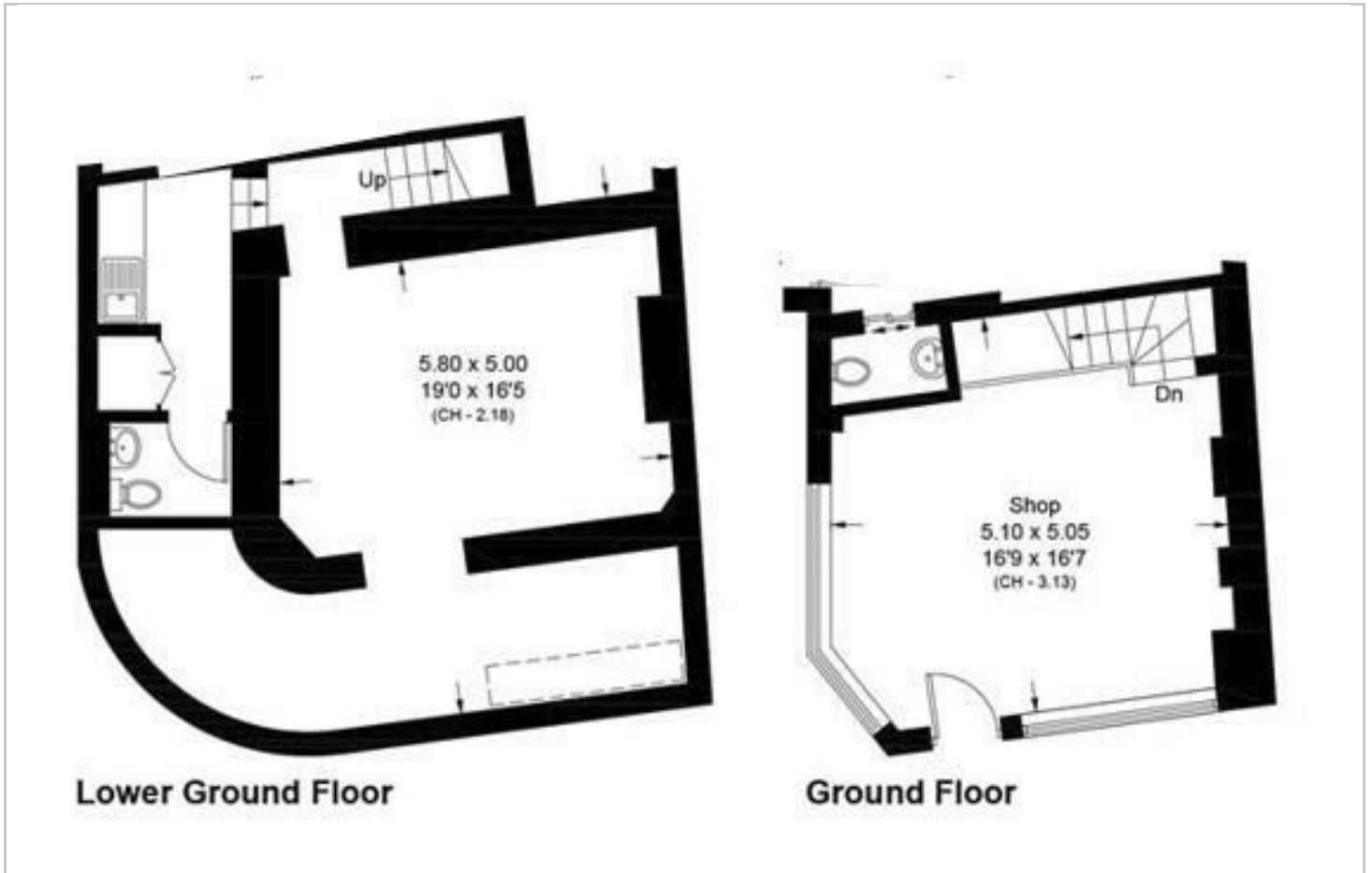
£40,000 P/A

A prime retail unit available immediately, the unit has a double aspect on the corner of Halsey Street and Milner Street, just off Lennon Gardens and very close to Sloane Square and Harrods,

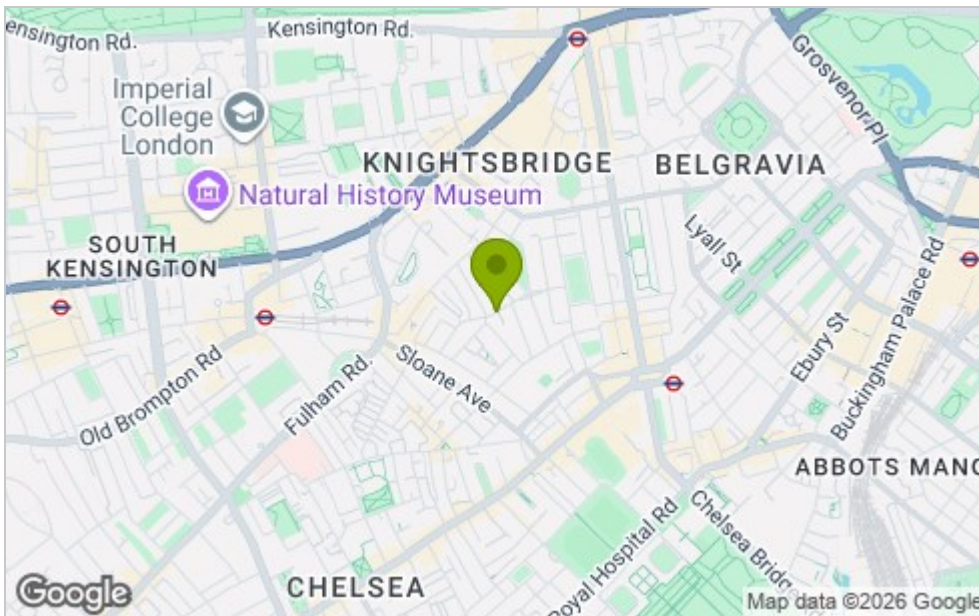
The landlord would like a FLORIST as a tenant as a preference or a coffee shop as a back up.

- Ground and lower
- Corner double aspect
- Florist as Preference
- Kitchen and toilet
- Available Now
- Excellent location

Floor Plan



Area Map



Viewing

Please contact our Chatterton Rees Office on 020 3780 0580 if you wish to arrange a viewing appointment for this property or require further information.

These particulars, whilst believed to be accurate are set out as a general outline only for guidance and do not constitute any part of an offer or contract. Intending purchasers should not rely on them as statements of representation of fact, but must satisfy themselves by inspection or otherwise as to their accuracy. No person in this firm's employment has the authority to make or give any representation or warranty in respect of the property.

Energy Efficiency Graph

Energy Efficiency Rating		Current	Potential
Very energy efficient - lower running costs			
(92 plus) A			
(81-91) B			
(69-80) C			
(55-68) D			
(39-54) E			
(21-38) F			
(1-20) G			
Not energy efficient - higher running costs			
England & Wales		EU Directive 2002/91/EC	
Environmental Impact (CO ₂) Rating		Current	Potential
Very environmentally friendly - lower CO ₂ emissions			
(92 plus) A			
(81-91) B			
(69-80) C			
(55-68) D			
(39-54) E			
(21-38) F			
(1-20) G			
Not environmentally friendly - higher CO ₂ emissions			
England & Wales		EU Directive 2002/91/EC	